

Model TB-2 Series Embedded and Surface Mount Traffic Barrier

SPECIFICATION
BULLETIN
#SPC-AM-022
REV. 03-11



Model TB/P/CY-2
Surface Mount Traffic
Barrier with base plate.
Yellow powder coated
finish.



Model TB/CY-2 Embedded Mount Traffic
Barrier. Yellow powder coated finish.

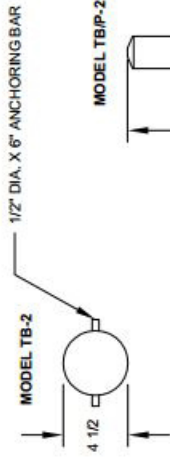
SPECIFICATIONS:

- **Model TB-2 Series Traffic Barrier** post is 4-1/2" dia. 1/8" wall steel pipe with top end capped. Post can be filled with concrete before installation.
- **Model TB-2** post is 61-3/8" tall allowing the bottom of the post to be embedded 20" into a concrete footing with 41-3/8" inches above ground.
- **Model TB/P-2** is 41-3/8" tall with the post welded to a 3/8" x 10" x 10" steel base plate. Base plate has four 25/32" dia. holes for anchors. Base plate has a hole under the post to allow filling with concrete.
- **Standard:** Model TB/P-2 includes four 1/2" x 5" screw type concrete anchors.
- **Standard:** Post and base plate are high visibility yellow powder coated finish. Includes two reflective decals for nighttime visibility.
- **Optional:** Choice of colors of powder coat finish. See Specification Bulletin #SPC-CO-001.

- **4-1/2" Diameter 1/8" wall steel pipe post**
- **Embedded mount or surface mount with 10" square base plate with anchors for securing to hard paved surfaces**
- **Bright yellow powder coat finish with two reflective bands for high visibility**

AVAILABLE OPTIONS

Choice of colors of Powder Coated finish



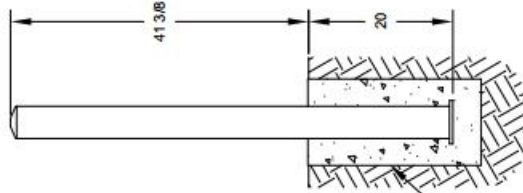
MODEL TB/P-2



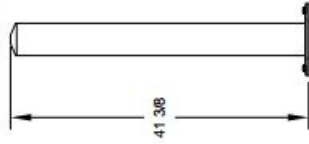
MODEL TB-2



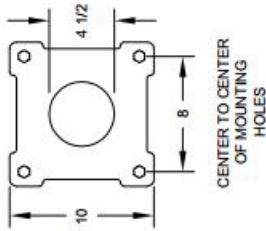
MODEL TB-2



MODEL TB/P-2



MODEL TB/P-2



ALL DIMENSIONS IN INCHES

DRAWN BY
WWM

TITLE MODEL TB-2 EMBEDDED MOUNT AND MODEL TB/P-2 SURFACE MOUNT
TRAFFIC BARRIERS

DATE 3-22-11

DWG. NO. AI-2007