

Pet Fountain Series

MODEL M-PM34

PET FOUNTAIN

STANDARD FEATURES

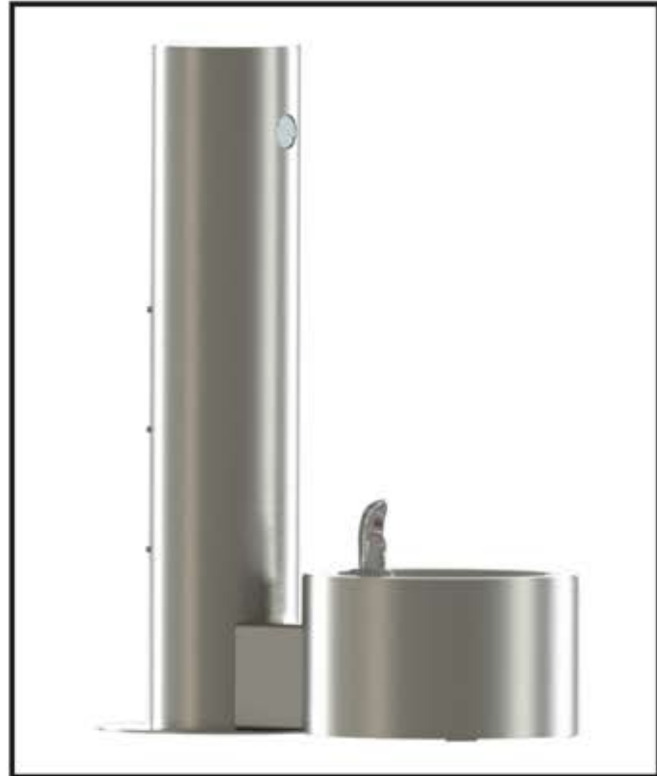
- 100 mesh inlet strainer
- Pushbutton requiring less than 5 pounds for activation
- Stainless steel, anti-rotation, non-squirt bubbler
- Vandal resistant stainless steel access panel
- 18 gage, 304 stainless steel basin
- Heavy duty, 304 stainless steel polished to a satin finish

SUGGESTED SPECIFICATIONS

Pet fountain shall be Murdock model M-PM34, single station pet fountain. Pet fountain pushbutton shall be self-closing requiring less than 5 pounds of force to activate the internally mounted valve.

Bubbler shall be stainless steel with a non-squirt feature and operate on a water pressure range of 20-105 psig.

Unit shall be constructed of 14 gage type 304 stainless steel polished to a satin finish with 18 gage pet fountain bowl. Bottom plate shall be 3/16" thick and include three mounting holes with two additional mounting holes for pet fountain. 1/2" expansion anchor bolts shall be furnished. All other exposed fasteners shall be vandal resistant stainless steel screws.



Standard Model: M-PM34

MODEL:

(Must Specify)

- M-PM34 Satin stainless finish (Shown)
- M-PM35 Green powder-coat
- M-PM36 Red powder-coat
- M-PM37 Blue powder-coat

Custom color finishes available upon request

OPTIONS

(additional costs may be incurred)

- FRU1 Underground freeze-resistant valve ¹
- IAP In-ground anchor plate ¹
- LOGO Customer Specified logo ¹

Options Notes:

¹ See separate option sheet.



Member of
U.S. Green
Building
Council



Recyclable
Product

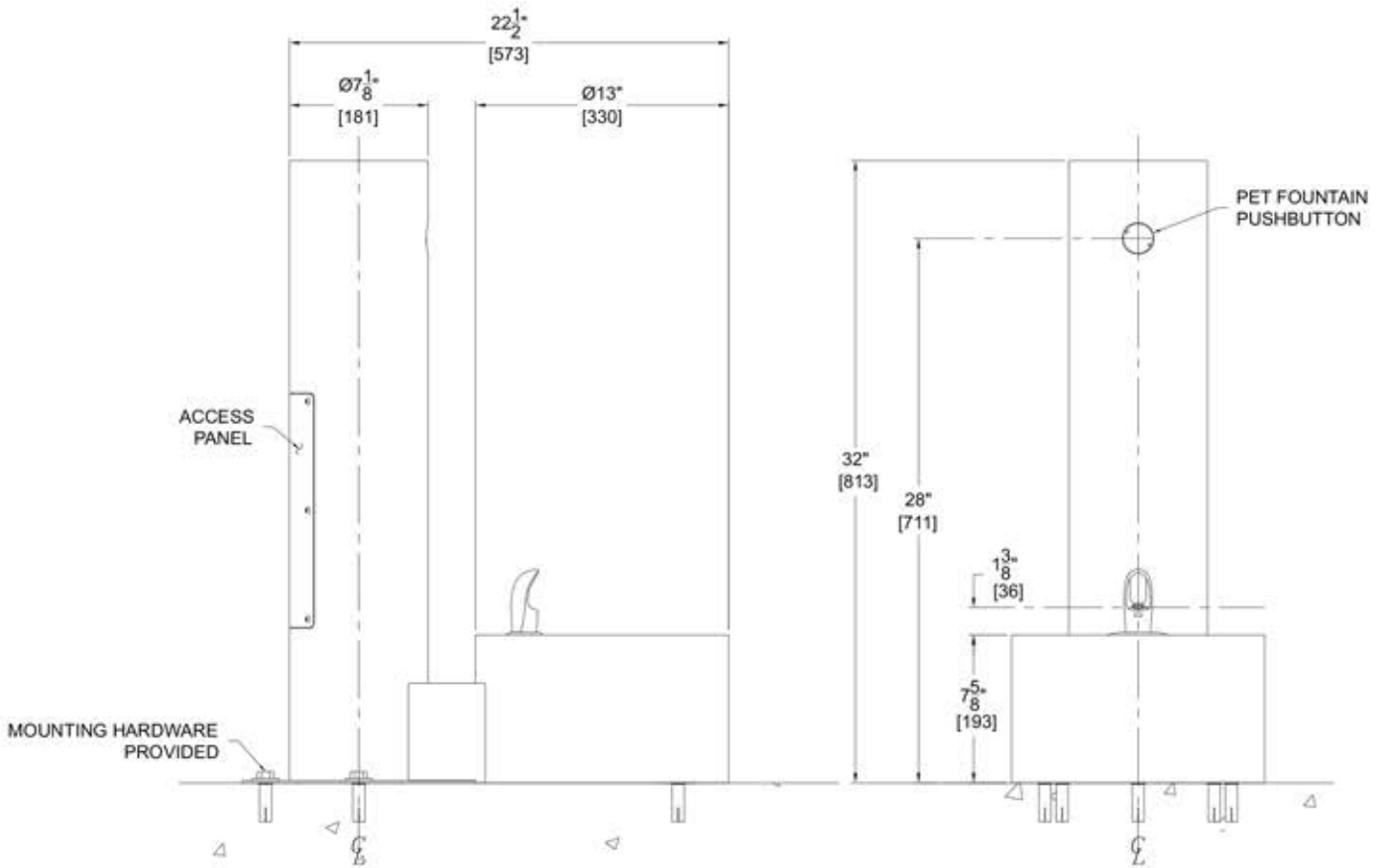
Complies with the
following standards:



Pet Fountain Series

MODEL M-PM34

PET FOUNTAIN



GENERAL NOTES:
1. ALL DIMENSIONS ARE IN INCHES [MM].

Murdock Mfg.™ warrants that its products are free from defects in material or workmanship under normal use and service for a period of one year from date of shipment. Murdock's liability under this warranty shall be discharged solely by replacement or repair of defective material, provided Murdock™ is notified in writing within one year from date of shipment, F.O.B. Industry, California.

SELECTION SUMMARY & APPROVAL FOR MANUFACTURING	Model Number & Options _____	Quantity _____	All dimensions are subject to manufacturer's tolerance of plus or minus 1/8" nominal and subject to change without notice. Murdock assumes no responsibility for use of void or superseded data. Dimensions may change with the addition of optional accessories. Murdock Mfg.™, Member of Morris Group International™. Please visit www.murdockmfg.com for most current specifications.
	Company _____		
	Contact _____	Title _____	
	Signature (Approval for Manufacturing) _____	Date _____	