

# INSTALLATION INSTRUCTIONS FOR HYDRANT M-NPL75A/B

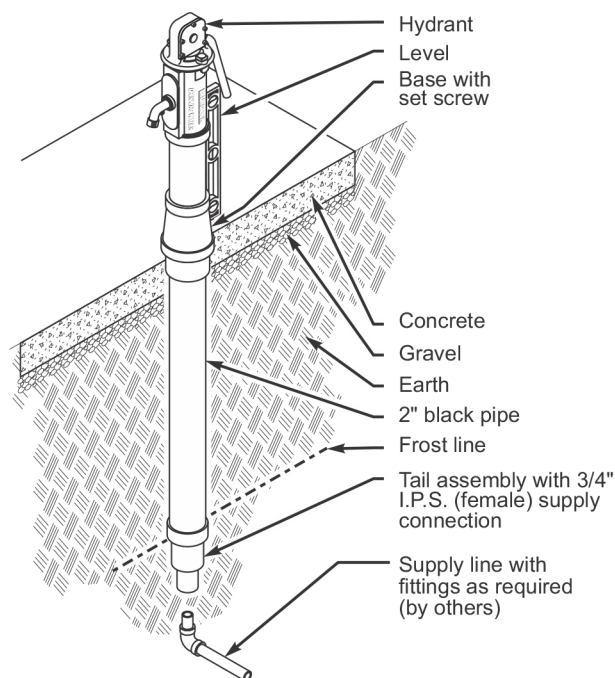
Prepare trench for water-supply line. Below hydrant location, prepare hole to trench depth and large enough for a person to work. Lay water-supply line into trench.

Install hydrant fully assembled as shipped. Position hydrant at desired location by laying two boards across hole, one on either side of outer casing, and brace as necessary under hydrant stock. To ensure plumb installation, place a bubble level against hydrant and adjust bracing boards until unit is plumb.

Purge water-supply line. Connect water-supply line, adding fittings as necessary.

Back-fill trench and hole. Compact back-filled earth. Remove bracing boards. If necessary, loosen set screw in base and adjust vertical position of base on outer casing so that bottom of flared part of base is at grade level.

If concrete slab is desired, prepare hole surrounding hydrant to accommodate concrete slab. Spread and compact gravel as necessary. Pour concrete up to bottom of flared part of hydrant base. Finish concrete as necessary.



# MAINTENANCE INSTRUCTIONS FOR HYDRANT M-NPL75A/B

All normal maintenance is done from above grade. O-rings and washers should normally be replaced annually. A repair kit including these items is available from the factory. A T-handle wrench is necessary and is also available from the factory.

Hydrant handle must turn 180° without resistance to turn on water. If handle meets resistance toward end of stroke or does not turn on water, turnbuckle needs to be adjusted.

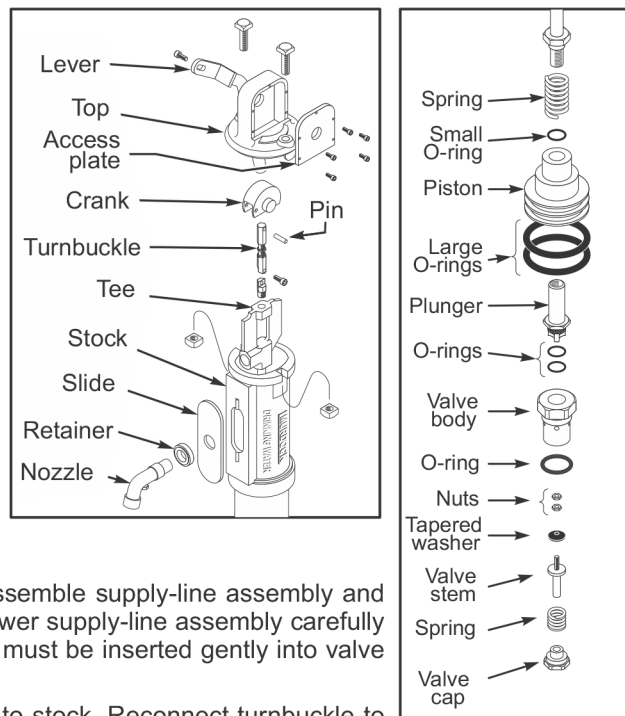
To replace O-rings and washers, shut off water supply. Remove nuts and bolts securing top to stock. Unscrew and remove nozzle from stock. Remove entire assembly from stock, keeping all parts in same alignment as removed so that turnbuckle adjustment is not changed. Using T-handle wrench, remove valve from bottom of hydrant housing.

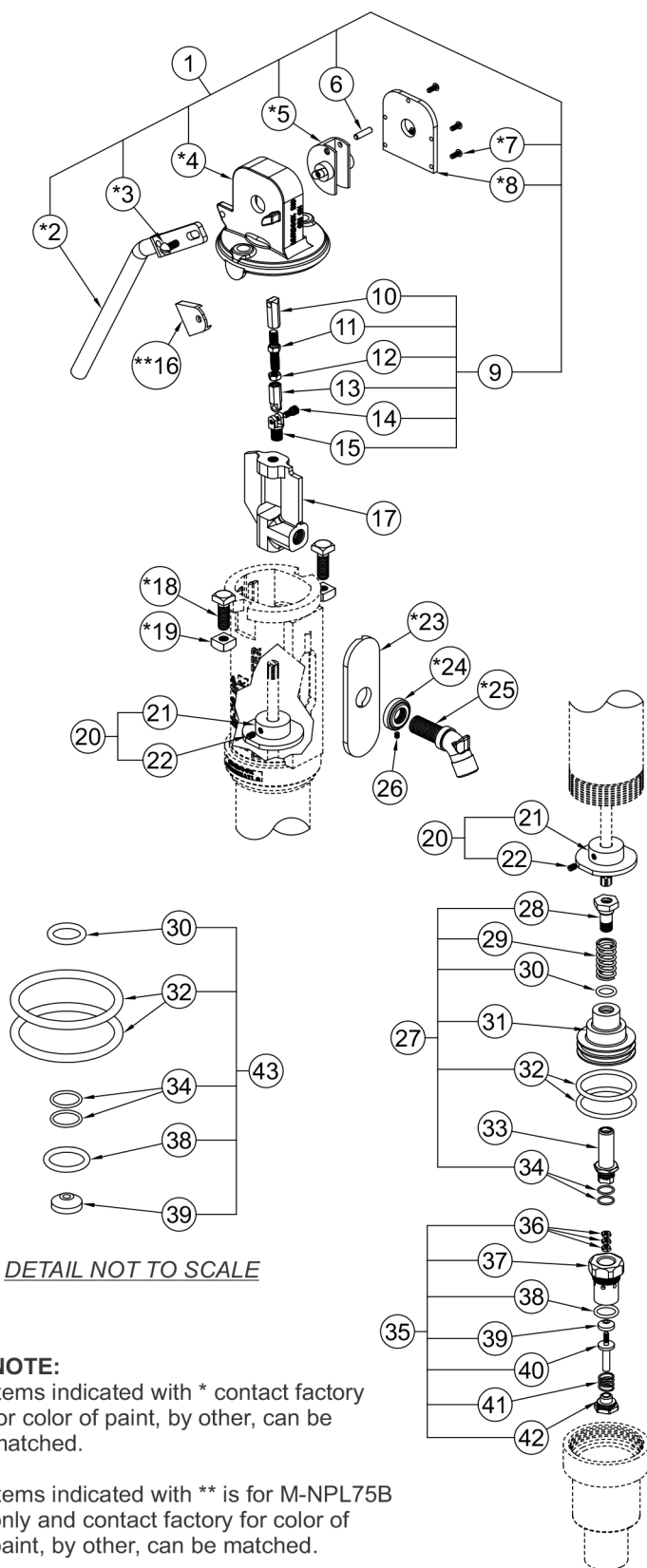
Replace seals as follows: **KIT #4102-639-001**

- Piston
  - 1 small O-ring
  - 2 large O-rings
- Valve body
  - 1 O-ring
- Valve stem
  - 1 tapered washer

Lubricate O-rings with FDA-approved, food-grade grease. Reassemble supply-line assembly and valve assembly. Replace valve in bottom of hydrant housing. Lower supply-line assembly carefully into stock. As assembly approaches operating position, plunger must be inserted gently into valve body.

Replace slide and nozzle. Replace nuts and bolts securing top to stock. Reconnect turnbuckle to crank. Replace access plate and lever.





ITEM	Part number	Description
1	4100-755-001	LEVER, CAMBOX ASSY
2	4100-885-001	LEVER HANDLE
3	0116-019-000	5/16"-18 x 3/4" SCREW
4	4100-757-199	CAMBOX
5	4100-900-199	CRANK
6	4100-901-199	CRANK PIN
7	0112-002-000	#10-32 x 1/2" VR SCREW
8	4100-743-199	ACCESS PLATE
9	4100-745-001	TURNBUCKLE ASSEMBLY
10	4100746-199	TURNBUCKLE PIN YOKE
11	4100-747-199	TURNBUCKLE ADJ. SCREW
12	4100-748-199	TURNBUCKLE JAM NUT
13	4100-749-199	TURNBUCKLE SWIVEL
14	4100-751-000	1/4"-20 x 1/2" CAP SCREW
15	4100-750-199	TURNBUCKLE SWIVEL YOKE
16	4100-890-199	LEVER STOPPER
17	4100-730-299	BUTTERFLY TEE
18	4100-721-000	CAP BOLT
19	0302-201-000	CAP BOLT SQ. NUT
20	4100-742-001	SPACER ASSEMBLY
21	4100-742-199	SPACER
22	0192-010-000	1/4"-20 x 3/8" ALLEN SET SCRW
23	4100-148-000	HYDRANT SLIDE PLATE
24	4100-776-199	NOZZLE NUT
25	4100-121-199	PLAIN END NOZZLE
26	0181-004-000	#10-32 x 1/4" SET SCREW
27	4100-737-001	PISTON SUB-ASSEMBLY
28	4100-758-199	PLUNGER COUPLING
29	4100-756-000	PLUNGER SPRING
30	0404-020-00	SMALL PISTON O-RING
31	4100-737-199	PISTON
32	0404-021-000	LARGE PISTON O-RING
33	4100-751-199	PISTON TIP
34	0404-018-000	PISTON TIP O-RING
35	4100-738-001	VALVE ASSEMBLY
36	0302-002-000	#10-24 SEAT GUIDE NUT
37	4100-738-199	VALVE BODY
38	0404-019-000	VALVE SEAT O-RING
39	4100-898-000	SEAT WASHER
40	4100-889-199	SEAT HOLDER
41	4100-774-000	GUIDE SEAT SPRING
42	4100-888-199	SPRING SEAT GUIDE
43	4102-639-001	O-RING REPAIR KIT
30	0404-020-00	SMALL PISTON O-RING
32	0404-021-000	LARGE PISTON O-RING
34	0404-018-000	PISTON TIP O-RING
38	0404-019-000	VALVE SEAT O-RING
39	4100-898-000	SEAT WASHER