

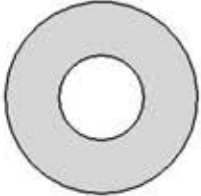


Model # BARK-450

HARDWARE



3/8" x 3"
Machine Bolt



3/8" Washer



3/8" Hex Nut

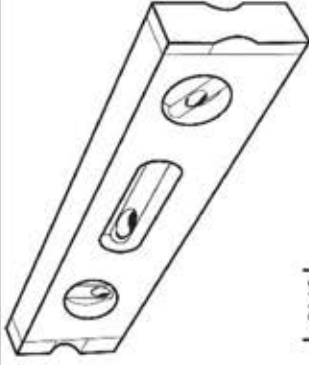


5/16" x 1"
Machine Bolt

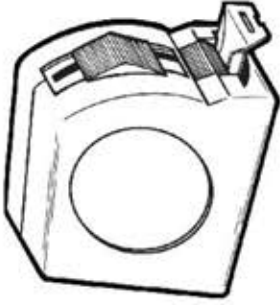


5/16" Washer

TOOLS REQUIRED



Level



Tape Measure



1/2" & 9/16"
Socket Wrench



1/2" & 9/16"
Wrench

BARK-450 ROVER JUMP OVER

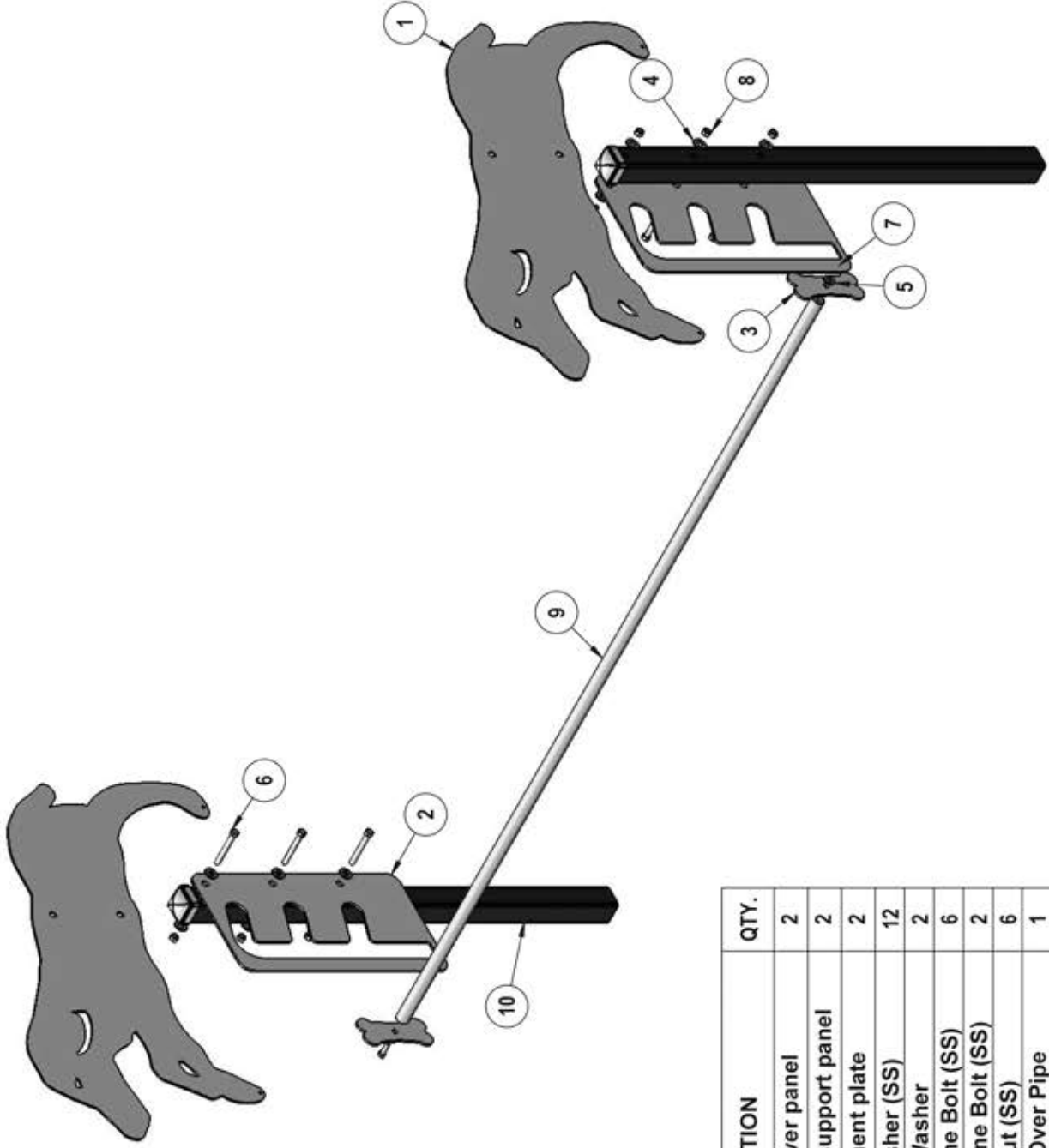
Frame: Laser cut 10 ga. sheet steel. Posts are 2" sq. tubing. Jump rod is made from 1" x 15 ga. steel tubing.

Frame Coating: Electrostatic powder coated application oven cured.

Panel Coating: Oven fused functionalized polyethylene copolymer-based thermoplastic. Fluidized bed coating application with superior mechanical performance, impact resistance and UV-stability.

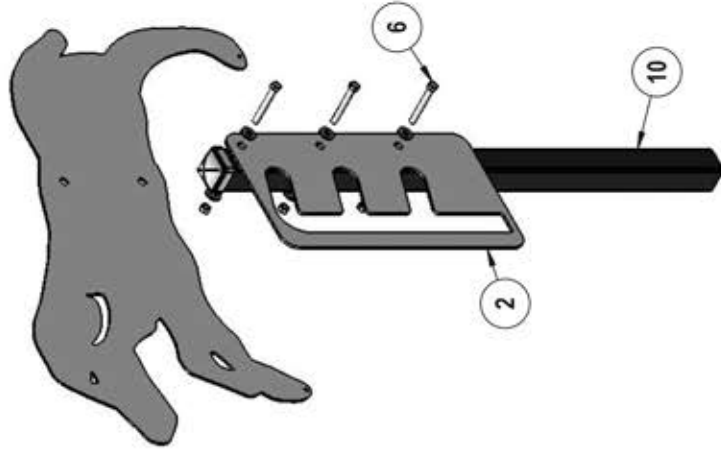
Dimensions: 78-1/2" long x 42-3/4" deep x 34-1/2" tall. Jump rod can be placed at heights of 9-1/4", 14-3/8" or 19-1/2".

COMPONENTS

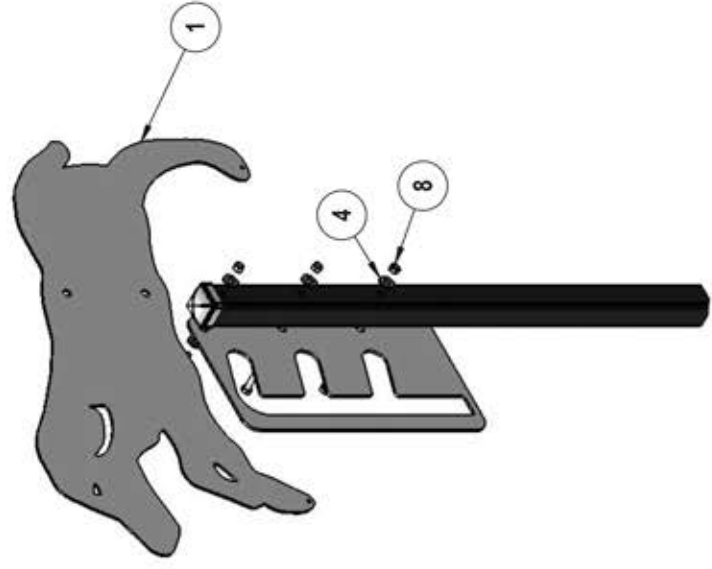


ITEM NO.	PartNo	DESCRIPTION	QTY.
1	T-01-08-0006	rover jump over panel	2
2	T-01-08-0007	rover jump over support panel	2
3	T-01-08-0008	bone attachment plate	2
4	33-02-0008	3/8" Flat Washer (SS)	12
5	33-02-0007	5/16" SS Washer	2
6	33-05-0062	3/8" x 3" Machine Bolt (SS)	6
7	33-05-0029	5/16" x 1" Machine Bolt (SS)	2
8	33-01-0018	3/8" Hex Nut (SS)	6
9	T-01-08-0034	Rover Jump Over Pipe	1
10	T-01-08-0138	rover jump over support post	2

STEP 1

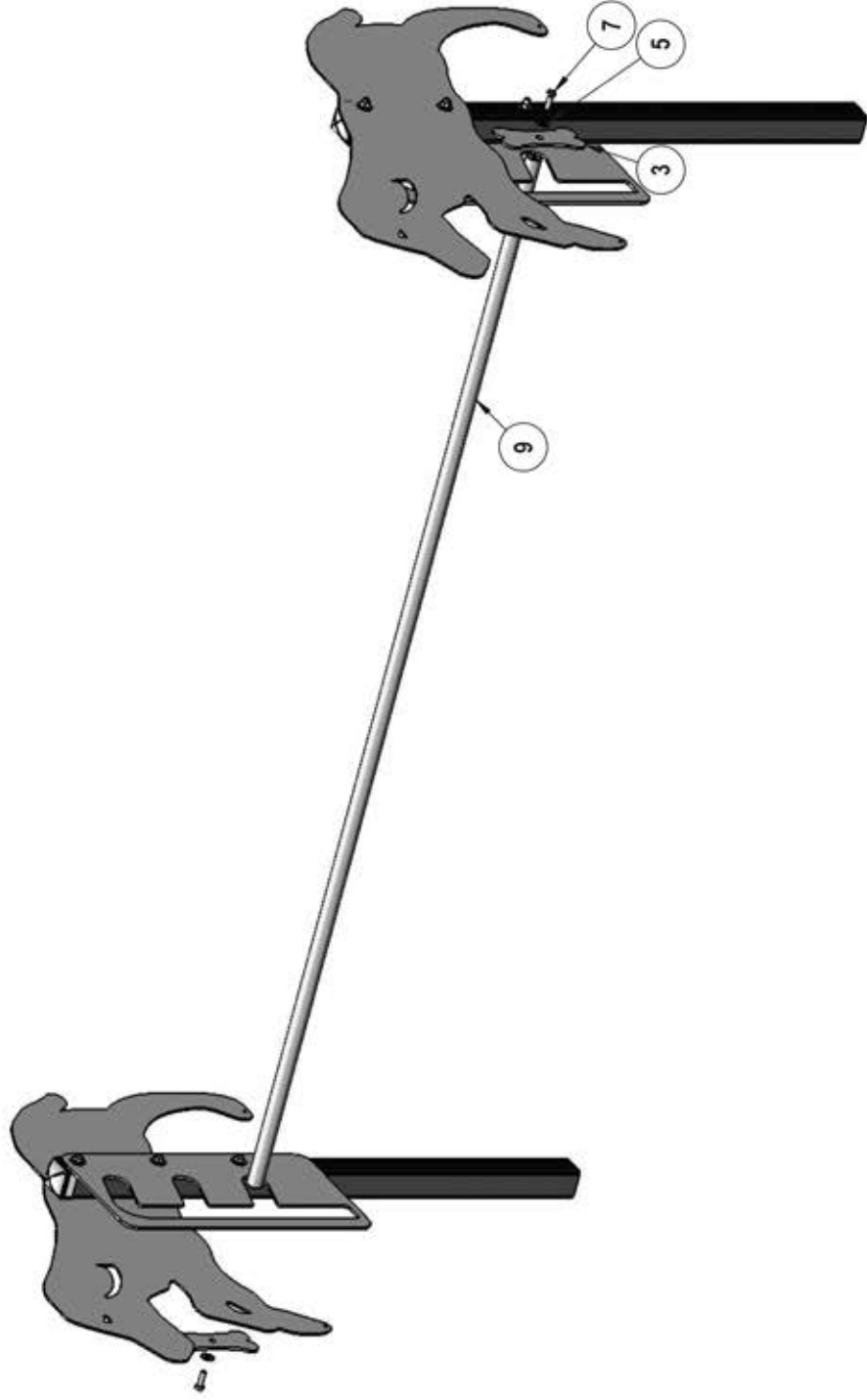


Attach Rover Jump Over Panel and Rover Jump Over Support Panel to Rover Support Post using specified hardware.

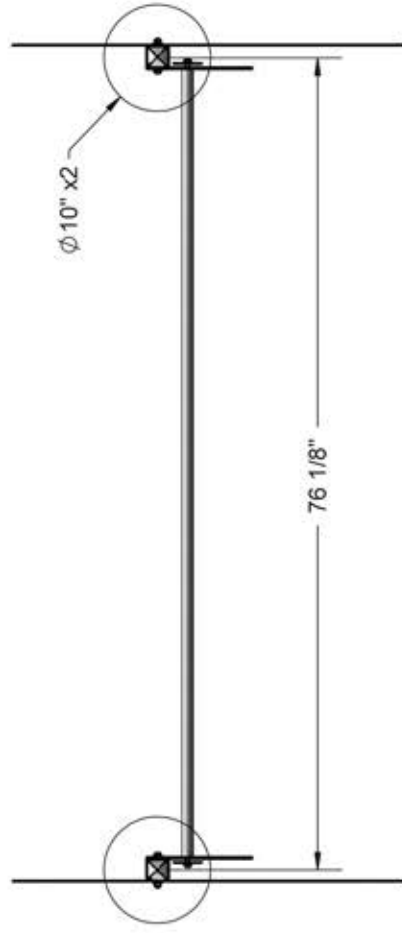


STEP 2

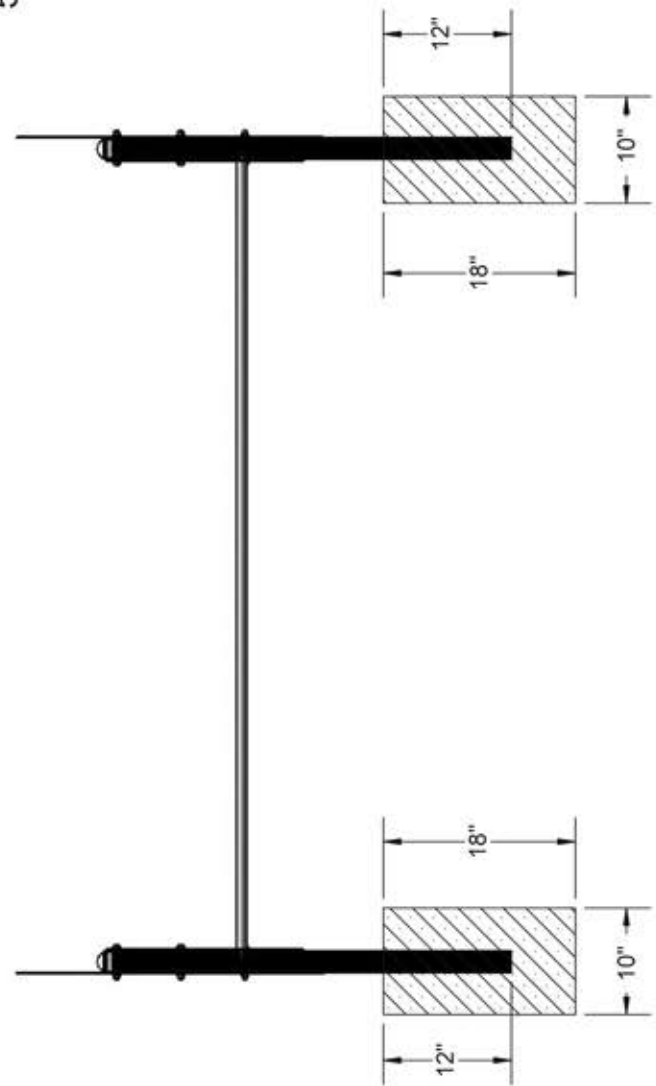
Pull Jump Pipe through corresponding slots in the Rover Jump Over Support Panel, then attach Bone Attachment Plates to both ends of the Jump Pipe using specified hardware. Use Loctite on these bolts.



FOOTINGS



Estimated Required Concrete:
5 - 50 lb. bags of concrete mix



OVERALL DIMENTIONS

