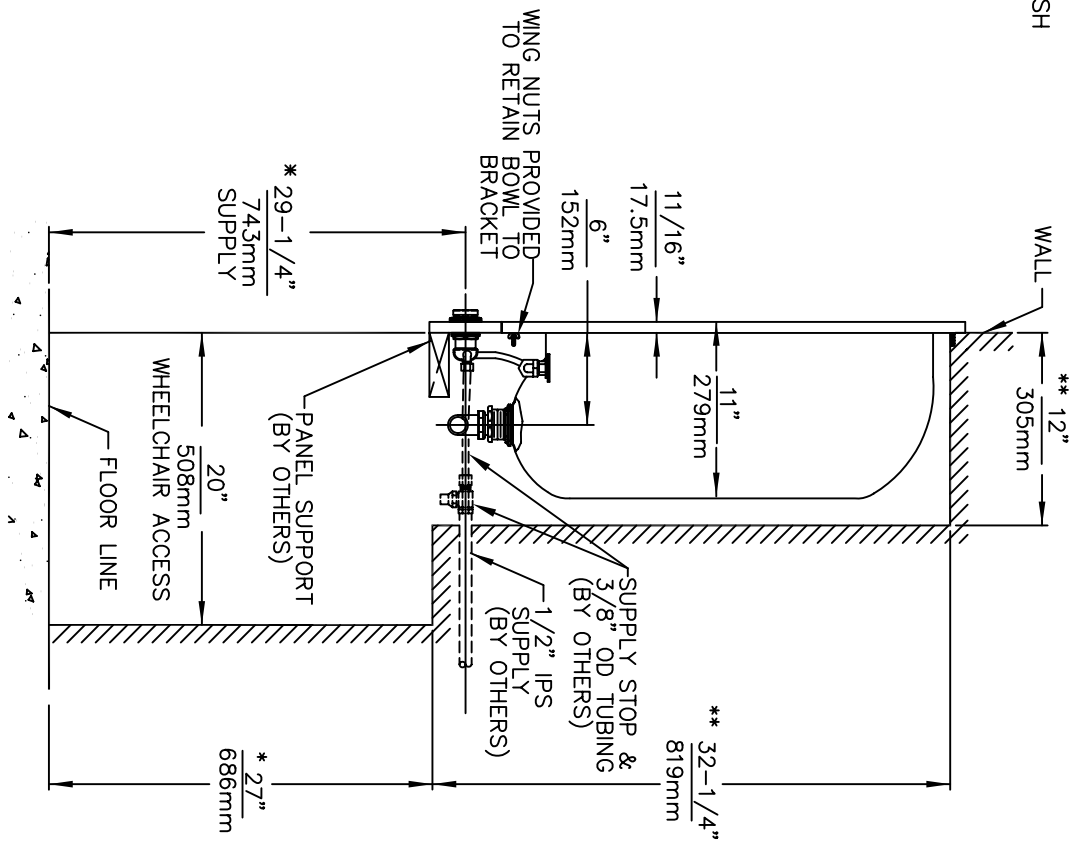
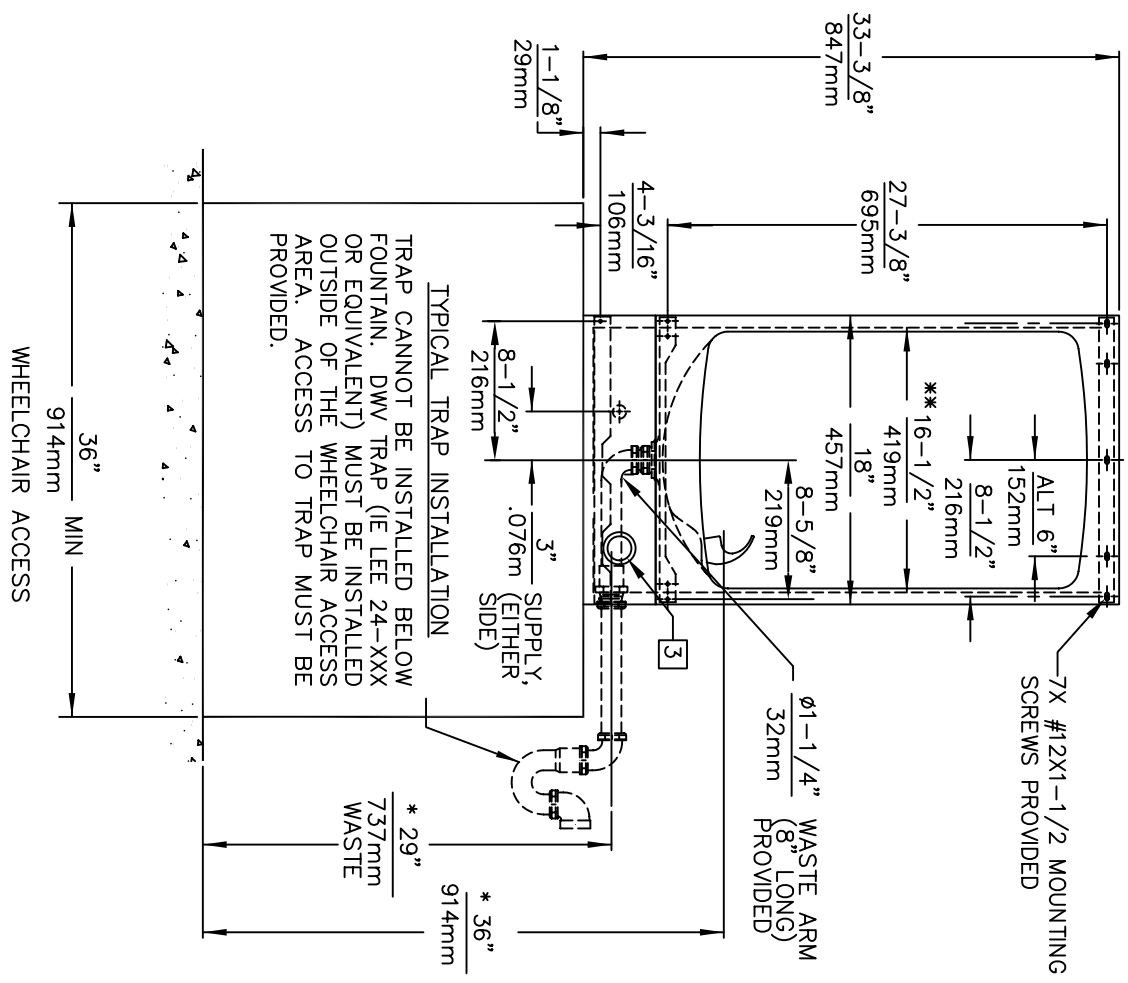



NOTES:

1. **HOLD ROUGH-IN DIMENSIONS PLUS OR MINUS 1/4" (6.4mm)
2. *THIS IS A DUAL PURPOSE WHEELCHAIR ACCESSIBLE DRINKING WATER FACILITY. WHEN INSTALLING THIS UNIT LOCAL, STATE OR FEDERAL CODES SHOULD BE ADHERED TO. FOR INSTALLATIONS OTHER THAN THAT SHOWN, DIMENSIONS MUST BE ADJUSTED ACCORDINGLY.
3. REFER TO 5874/YRK5874 OPERATION AND MAINTENANCE MANUAL FOR PUSH BUTTON AND VALVE INSTALLATION/MAINTENANCE INSTRUCTIONS.



09835C00



318 East 8th Street | Post Office Box #1891 La Crosse, KS | 67548
 Ph: 785-222-2515 | TF: 888-846-2693 | TF Fax: 866-436-7601

EGR. NO.	REVISION	DATE	BY	CHKD.	SCALE	DRAWING TYPE	INSTALLATION/FABRICATION
09835C00	2405	10/91			1:12		

DRAWING	DATE	BY	CHKD.	SCALE	DRAWING TYPE	INSTALLATION/FABRICATION
09835C00	10/91			1:12		